

## To download data from the GPR

You need to restart the GPR unit

After it starts up and the main selection screen appears

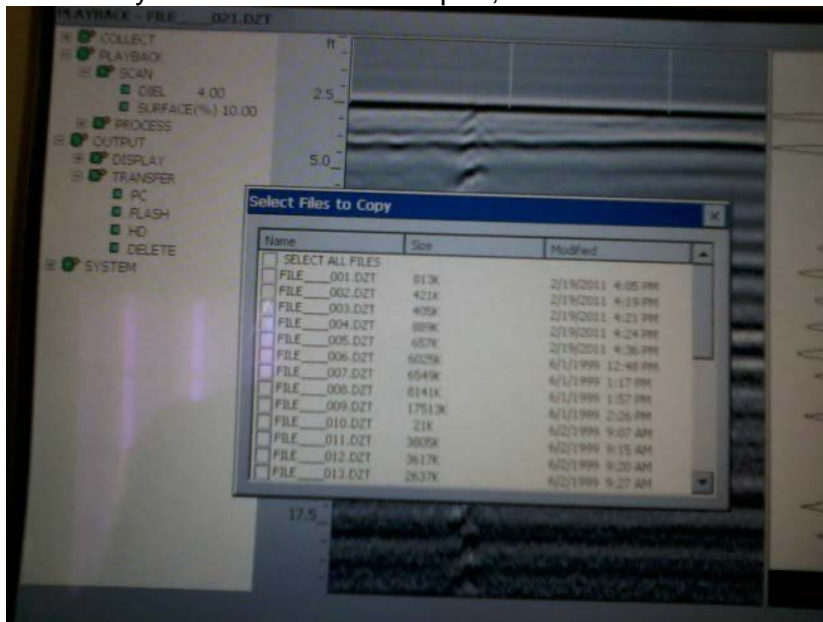
Click the first button on the left hand side that reads TerraSIRch

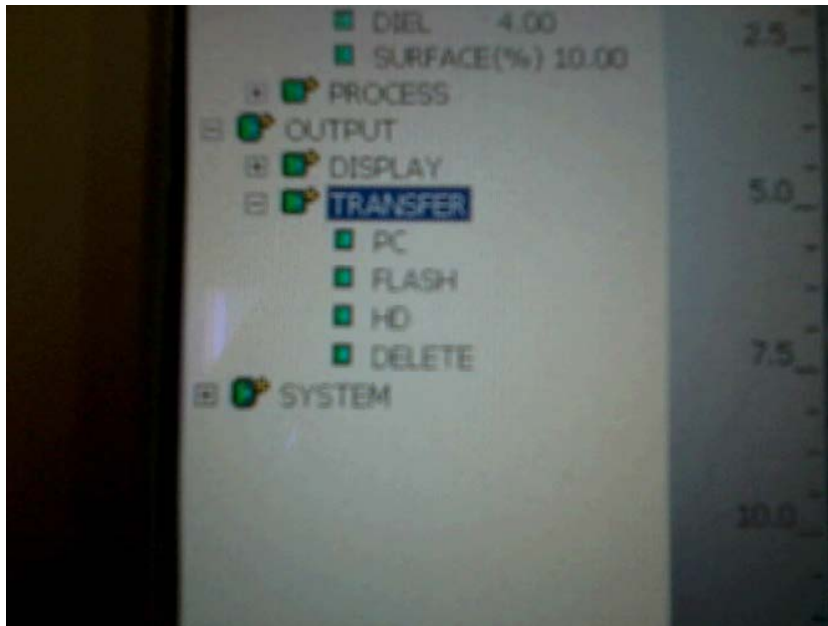


It will look a lot like the screens used to record data

At this point you can insert your flash drive in the back of the unit

It will ask you to select a file to open, it doesn't matter what file you choose





Use the down arrow to select Output

In the output menu, select transfer

**\*\*Note\*\*** - HD refers to USB 2.0 or 3.0 hard drives or thumb drives. Flash refers to CompactFlash memory cards.

**Select HD for flash drive transfer**

The same dialog box will open and you can choose what files you want to transfer

After selection hit the enter key

At the bottom of the screen you should see a blue bar that is filling

After the bar is finished you can remove your flash drive and power down the machine

The files are in an unconventional format with extension .dzt

You can download a converter that takes those files and changes them to a bitmap that can be viewed on any computer.

The link is <http://www.geophysical.com/softwareutilities.htm>.

You want to download the Radan to bitmap conversion utility.